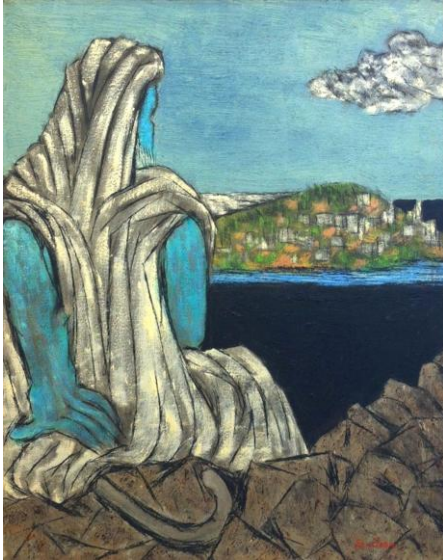


Envisioning the Sacred: Modern Art from the Collection

March 1–June 21, 2026 at the Derfner Judaica Museum



Ben-Zion (1897–1987), *Moses Looking Down to the Promised Land*, 1962. Oil on canvas, 30 3/4 x 24 3/4 in. Gift of Geraldine Lipschutz, by exchange, HHAR 7005.

Derfner Judaica Museum + Art Collection at Hebrew Home at Riverdale is pleased to announce our upcoming exhibition, *Envisioning the Sacred: Modern Art from the Collection*, which will be on view from March 1 through June 21, 2026. Admission to the Museum is always free. Photo I.D. required for entry.

Envisioning the Sacred: Modern Art from the Collection features forty-nine prints, paintings, and drawings from the Museum's permanent collection by twentieth and twenty-first-century artists working in a range of modernist styles—from figurative to abstract. These twenty-one artists explore stories and characters from the Bible, represent Jewish observances and traditions, or take inspiration from language and legend. Many of the artists express their Jewish identities and relationships to Jewish communal experience through their work. For some, mysticism and quests for spiritual connection are essential features of their art.

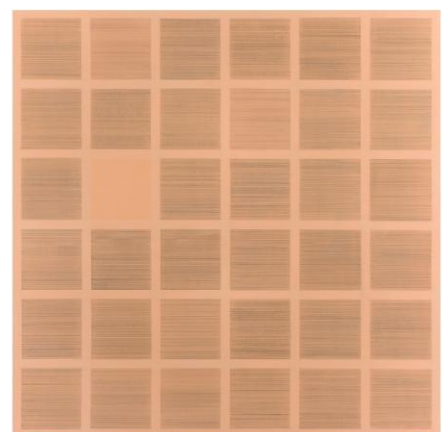
Abel Pann (1883–1963), influenced by Art Nouveau and Symbolism, drew inspiration from Creation myths. Other artists exploring biblical themes include Ben-Zion (1897–1987), Marc Chagall (1887–1985), Percival Goodman (1904–1989), and Abraham Rattner (1895–1978).

Nostalgia for Jewish customs and religious observances motivated Adam Muszka (1914–2005) and Anatoli Kaplan (1902–1980) in their portrayals of life in traditional communities. The Sabbath and Jewish holidays are present in the works of Louise August (1931–ca. 2017), Linda Plotkin (b. 1938), and Mark Podwal (1945–2024).

Abstract works by Peter Freudenthal (b. 1938), Robert Kirschbaum (b. 1949), and Susan Schwalb (b. 1944) evoke Jewish mysticism, including references to Kabbalah and Jewish legends. Four other artists, A. Raymond Katz (1895–1974), Jane Logemann (b. 1942), Chava Wolpert Richard (1933–2015), and Rina Rotholz (1928–2020), use Hebrew letters that draw attention to both the abstract and spiritual qualities of language.

The expressive and colorful synagogue interiors in works by Mordechai Avniel (1900–1989), Zygmunt Menkes (1896–1985), and Jacques Yankel (1920–2020) capture the spiritual presence embodied in these spaces, while Joyce Ellen Weinstein (b. 1940) depicts the solid facade of the Choral Synagogue in St. Petersburg, alluding to the precarious position of Russian Jews.

Each of these artists finds a modern visual language with which to deeply and authentically explore Jewish themes that resonate with personal meaning and larger cultural significance.



Susan Schwalb (b. 1944), *Harmonizations III*, 2015. Goldpoint, silverpoint, Jaune Brilliant, and yellow gesso on paper on panel, 24 x 24 x 2 in. Gift of Susan Schwalb in memory of Judge Morris and Evelyn Schwalb, HHAR 6465.



Jacques Yankel (1920–2020), *Torah I*, ca. 1972. Gouache on paper, 25 3/4 x 19 3/4 in. Gift of Diana Weinstock Roberts, 15.02. © 2026 Artists Rights Society (ARS), New York / ADAGP, Paris.

Museum Hours

Museum hours: Sunday–Thursday, 10:30 a.m.–4:30 p.m. Photo ID is required for all visitors to the Hebrew Home campus. Call 718.581.1596 or email art@riverspring.org to schedule in-person or virtual group tours or for holiday hours. For further information, visit our website at www.derfner.org.

About Hebrew Home at Riverdale

As a member of the American Alliance of Museums, Hebrew Home at Riverdale is committed to publicly exhibiting its art collection throughout its 32-acre RiverSpring Living campus, which includes the Derfner Judaica Museum and a sculpture garden overlooking the Hudson River and Palisades. Derfner Judaica Museum + Art Collection provides educational and cultural programming for residents and clients of RiverSpring Living, their families, and the general public from throughout New York City, its surrounding suburbs, and visitors from elsewhere. RiverSpring Living,

based in Riverdale, New York, is a leading non-profit organization serving older adults through a range of healthcare services, housing options, and community programs.



This exhibition is supported, in part, by public funds from the New York City Department of Cultural Affairs in partnership with the City Council.