

RACHEL LEIBMAN – *Illuminations*

On view from January 26 – April 25, 2010

Artist's Talk and Opening Reception

Tuesday, January 26, 6:30 – 8 p.m. ○ Elma and Milton A. Gilbert Pavilion Gallery

This event is free and open to the public. R.S.V.P. by calling 718.581.1596.



Rachel Leibman, *Illumination #21*, 2008, collage from ancient manuscript images, 20 x 16 inches

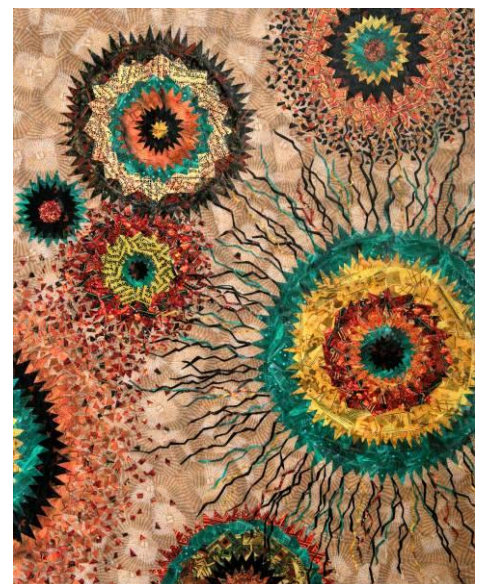
The Hebrew Home at Riverdale is pleased to announce its latest exhibition, *Rachel Leibman – Illuminations*, featuring collage works by Rachel Leibman on view from January 26-April 25, 2010. An opening reception and artist's talk will take place on Tuesday, January 26 from 6:30-8 p.m. in the Elma and Milton A. Gilbert Pavilion Gallery, 5901 Palisade Avenue in Riverdale. The event is free and open to the public. R.S.V.P. by calling 718.581.1596.

Using images of ancient manuscript pages as her palette, Leibman pieces together and "paints" pictures in bright, vibrant colors. New forms emerge through this process, resulting in both figurative and non-figurative images drawn from a rich variety of sources. The languages visible in the tiny pieces used to create each work range from Egyptian hieroglyphics to Hebrew, as well as many others.

The pictures also convey Leibman's interest in shared history and human connectedness, concepts which transcend the boundaries of geography and language. By combining visual remnants of different cultures, the works reflect on how society has become more global and hybridized while also celebrating the unique contributions of various cultures.

Leibman's work has been featured in solo exhibitions at the Monmouth Museum in Lincroft, NJ, Elizabeth McGraw Gallery in Livingston, NJ, and the Synagogue for the Arts in Tribeca, as well as in numerous group shows. She lives and works in New Jersey.

As a member of the American Association of Museums, The Hebrew Home at Riverdale is committed to publicly exhibiting its art collection throughout its 19-acre campus, including a sculpture garden overlooking the Hudson River and Palisades, and to providing educational and cultural programming that benefits both its residents and visitors from New York City and its surrounding suburbs. It also houses the Derfner Judaica Museum. The Home is a nonprofit, non-sectarian geriatric center serving more than 3,000 elderly persons through its resources and community service programs. For press images, contact the Curator's Office at (718) 581-1596 or eoleary@hebrewhome.org, or for further information visit our website at <http://hebrewhome.org/currentexhibits.asp>.



Rachel Leibman, *Illumination #18*, 2008, collage from ancient manuscript images, 20 x 16 inches